



IL PERCORSO TERAPEUTICO FUNZIONALE DI RIEQUILIBRIO E CONTROLLO DELLE MALATTIE AUTOIMMUNI CON LA MEDICINA BIOLOGICA CONSECUTIVA.

COME AFFRONTARE LA PENETRAZIONE DEL CONFLITTO E RIEDUCARE LE DIFESE FISIOLOGICHE DELL'ORGANISMO.

LA VISIONE CON L'USO DELLE CITOKINE LOW DOSES IN MEDICINA BIOLOGICA CONSECUTIVA

DOCTEUR MALZAC JEROME LOUIS ROBERT. APRILE 2020

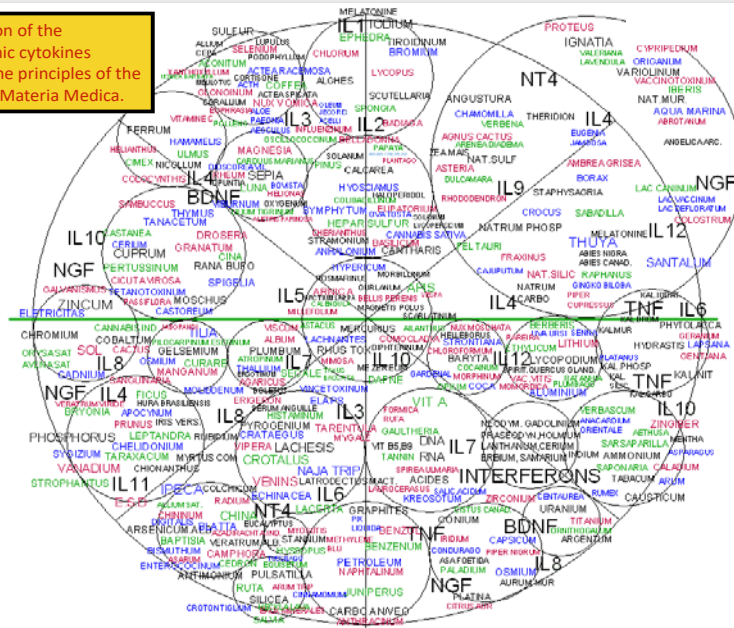
E NECESSARIO AGGIUNGERE AL PRECEDENTE ARTICOLO LA VISIONE MODERNA DELLA MEDICINA BIOLOGICA CONSECUTIVA E L'USO TERAPEUTICO DEI MEDIATORI IMMUNOLOGICI TALE CITOKINE , FATTORI DI CRESCITA CELLULAIRE E NERVOSI .

IL PROCEDIMENTO TERAPEUTICO SARA ILLUSTRATO CON QUESTI SEMPLICI DISEGNI AGGIUNTIVI ALL'ARTICOLO PRECEDENTE .

LA TEORIA DI CLASSIFICAZIONE OMEOPATICA (MATERIA MEDICA OMEOPATICA DI IMMUNOLOGIA CLINICA)



Classification of the homeopathic cytokines following the principles of the KOLLITSCH Materia Medica.



INTERLEUKINS IN THE CONTEXT OF KOLLITSCH MATERIA MEDICA



INTERFERONS AND TNF I IN THE
CONTEXT OF
KOLLISTCH MATERIA MEDICA

INTERFERONS

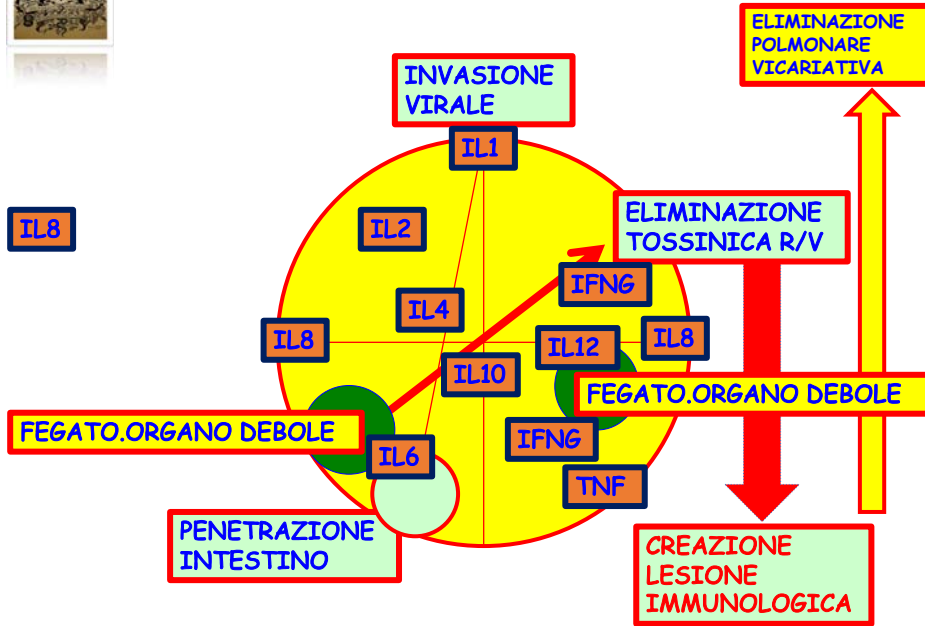
INTERFERONS

GROWTH FACTORS IN THE
CONTEXT OF
KOLLISTCH MATERIA MEDICA

APPLICAZIONI TERAPEUTICHE



CONFLITTO VIRALE 2020 , IN CHIAVE M.B.C.

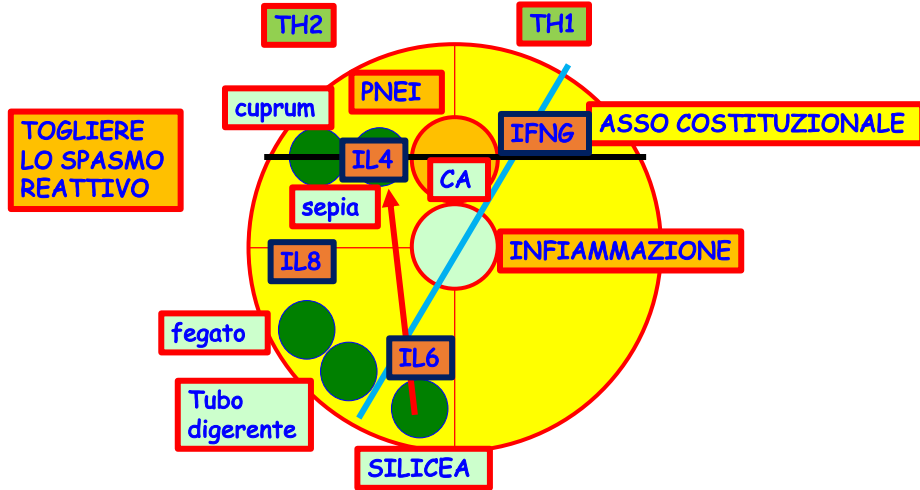


RELATIONSHIPS

HOMEOPATHIC MEDICINE	COMPARE	COMPLEMENTARY	ASSOCIATION WITH CELLULAR MESSENGER P.N ACTION (PSYCHO-NEURO ACTION)	ASSOCIATION WITH CELLULAR MESSENGER E.I ACTION (ENDOCRINO-IMMUNOLOGICAL)
IL-1	IODIUM SULFUR	SELENIUM PODOPHYLLUM INFLUENZINUM	MELATONIN 4C NT4-4C	INTERLEUKIN-2 4C INTERLEUKIN-3 4C
IL-2	SPONGIA	MAGNESIA PHOSPHORICA SEPIA HYOSCIAMUS COLIBACILLINUM	BDNF 4C NT4-4C	GCSF 4C INTERLEUKIN-1 4C INTERLEUKIN-3 4C
IL-3	NUXVOMICA GLONINUM	CHINARUBRA BOTHROPS STREPTOCOCCINUM	BDNF 4C ADRENALINUM 7C ACETHYLCHOLINUM 7C	INTERLEUKIN-2 4C INTERLEUKIN-4 4C
IL-4	API S, FERRUM, CUPRUM IGNATIA TETANOTOXINUM MORBILLINUM	NICOLLUM RANABUFO HISTAMINUM	MELATONIN 15C CNTF 4C/15C NGF 4C ADRENALINUM 4C ACETHYLCHOLINUM 4C	ALL CELLULARS MESSENGERS
IL-5	CHINARUBRA FERRUM CUPRUM	VISCUM ALBUM LILIUM TIGRINUM	BDNF 4C NGF 4C NT3-4C/15C DOPAMINUM 4C	INTERLEUKIN-3 4C GCSF 4C/15C



IL PERCORSO TERAPEUTICO NELL'AUTOIMMUNITA'

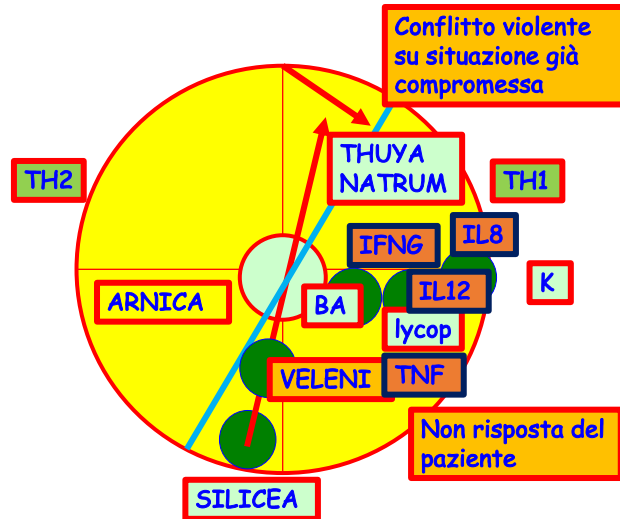


RELATIONSHIPS

HOMEOPATHIC MEDICINE	COMPARE	COMPLEMENTARY	ASSOCIATION WITH CELLULAR MESSENGER P.N ACTION (PSYCHO-NEURO ACTION)	ASSOCIATION WITH CELLULAR MESSENGER E.I ACTION (ENDOCRINO-IMMUNOLOGICAL)
IL-6	ARNICA 15C MERCURIUS CORROSIIVUS MANGANUS SILICUM PYROGENIUM TUBERCULINUM	LACHESIS SEPIA HYDRASTIS HISTAMINUM	BDNF 4C/15C NGF 15C NT4 4C/15C	INTERLEUKIN-11 4C INTERLEUKIN-12 4C TNF 4C IFN-GAMMA 4C 15C(30C 7)
IL-7	LANTHANIDES STANNUM THORIUM ADNI/ARN	VI SCUM ALBUM PLUMBUM METAL. HISTAMINUM	IGF-1 4C NGF 4C BDNF 4C MELATONIN 15C/30C ATROPINUM 4C/15C	INTERLEUKIN-5 4C INTERLEUKIN-12 4C TNF 4C TGF BETA 4C BETAENDORPHIN 4C
IL-8	GELSEMIUM IGNATIUM MANGANUM	NATRUM KALIUM ZINCUM	BDNF 4C NT4 4C NGF 4C / 15C CNTF 4C ATROPINUM 4C	INTERLEUKIN-7 4C INTERLEUKIN-11 4C IFN-GAMMA 4C TGF BETA 4C
IL-9	NATRUM DULCAMARA ARANEAE DIAEDEMA RAPHANUS	STAPHYSAGRIA AMBRA GRSEA LAC CANINUM	MELATONIN 4C/15C/30C NT4-4C/15C ADRENALINUM 4C	INTERLEUKIN-3 4C INTERLEUKIN-4 4C INTERLEUKIN-10 4C
IL-10	SERENA, ARNICA, MERCURIUS CUPRUM DIPTERIUM TETANOTOXINUM	APIS HISTAMINUM COLOCYNTHIS AMMONIUM ADNI/ARN	BDNF 15C/30C NGF 4C CNTF 15C GABA 4C/7C/9C	FGF 4C/15C TGF BETA 4C



IL PERCORSO TERAPEUTICO NELL'AUTOIMMUNITA'



RELATIONSHIPS

HOMEOPATHIC MEDICINE	COMPARE	COMPLEMENTARY	ASSOCIATION WITH CELLULAR MESSENGER	ASSOCIATION WITH CELLULAR MESSENGER
			P.N ACTION	E.I ACTION
IL-11	SILICEA CALCAREA SILICATA NATRUM FLUOROSILICUM	PHOSPHORUS CHELIDONIUM BRYONIA ARSENICUM ALBUM ENTEROCOCCINUM	MELATONIN 4C IGF-1 4C CNTF 4C DOPAMINUM 4C	INTERLEUKIN-3 4C INTERLEUKIN-4 4C GCSF 4C IFN-GAMMA 4C/15C
IL-12	LANTHANIDES NATRUM BARYTA LYCOPodium	MERCURIUS CORROSIVUS ALUMINA LACHESIS LACCANUM	MELATONIN 4C/15C BDNF 4C/15C NT3 4C/15C ADRENALINUM 4C/9C	INTERLEUKIN-6 4C TNF 4C IFN-GAMMA 4C TGF BETA 4C
IFN-GAMMA	ACIDES LANTHANIDES AMMONIUM	ARNICA SILICEA SULFUR ADN/ARN	NT4-4C BDNF 15C NGF 4C/15C	INTERLEUKIN-8 4C TNF 4C/15C MELATONIN 4C FGF 4C/15C
TNF	KALIUM HYDRASTIS LANTHANIDES	LYCOPodium AMMONIUM	BDNF 4C/15C CNTF 15C/30C NT3 15C / 30C	INTERLEUKIN-6 4C/15C INTERLEUKIN-12 4C/15C FGF 4C/15C
TGF-BETA	NATRUM STANNUM	LACHESIS SILICEA	NO RELATIONSHIPS	INTERLEUKIN-12 4C IFN-GAMMA 4C/15C TNF 4C PDGF 4C
FGF	FERRUM ARSENICUM NATRUM	AMMONIUM	ALL CELLULAR MESSENGERS	ALL CELLULAR MESSENGERS

RELATIONSHIPS

HOMEOPATHIC MEDICINE	COMPARE	COMPLEMENTARY	ASSOCIATION WITH CELLULAR MESSENGER P.N ACTION	ASSOCIATION WITH CELLULAR MESSENGER E.I ACTION
EGF	NATRUM HYDRASTIS FERRUM	SULFUR LYCOPODIUM ARGENTUM NITRICUM	NGF 4C NT4 4C	PDGF 4C IGF-1 4C FGF 4C
PDGF	NATRUM THUYA	CHINA RUBRA BOTHROPS ACHILLEA MILEFOLIUM	MELATONIN 4C/15C	INTERLEUKIN-3 4C INTERLEUKIN-9 4C
NGF	IGNATIA, SEPIA ASA FOETIDA PLATINA TETANOTOXINUM INFLUENZINUM	ARNICA MERCURIUS GELSEMIUM THUYA STAPHYSAGRIA HISTAMINUM	BDNF 4C NT-3 4C NT-4 4C ATROPINUM 9C	INTERLEUKIN-1 4C INTERLEUKIN-6 4C INTERLEUKIN-12 4C TNF 4C
BDNF	SEPIA AURUM MURIATICUM CUPRUM COLOCYNTHIS	ALUMINA LILIUM TIGRIDUM MAGNESIA LANTHANIDES	NT-3 4C NT-4 4C EGF 4C DOPAMINUM 4C/7C ACETYLCHOLINUM 4C/7C	INTERLEUKIN-6 4C INTERLEUKIN-8 4C
NT3/NT4	NATRUM SILICEA ANTIMONIUM CRUDUM	ARNICA LACHESIS ARSENICUM ALBUM STAPHYSAGRIA	BDNF 4C NGF 4C	INTERLEUKIN-4 4C INTERLEUKIN-6 4C INTERLEUKIN-8 4C
CNTF	CALCAREA BROMATA CALCAREA IODATA	IODIUM BROMUM	NGF 4C	INTERLEUKIN-4 4C INTERLEUKIN-10 4C